

5-Axis CNC Tool Grinder

For carbide tools machining



▶▶▶ GIVEALGRIND N4 B6

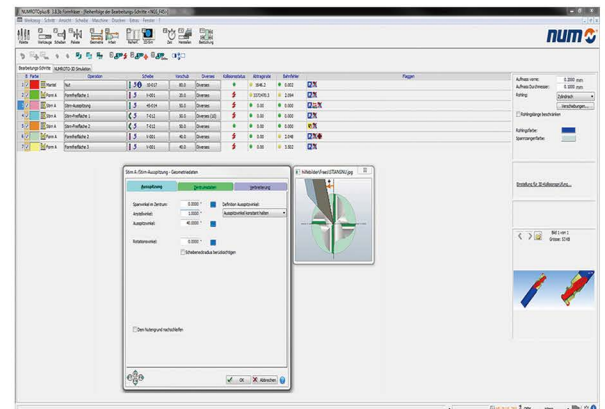
Overview

- Machine body is made of marble, excellent seismic performance;
- High-torque spindle for grinding, Equipped with 6(9)-station grinding wheel changer;
- Provides a variety of optional functions, including automatic wheel measurement;
- Using NUM FLEX+ for CNC system, with high quality ensures the speed and accuracy of the machine, rotary axes use digital direct drive technology, and equipped with high-precision feedback system ;



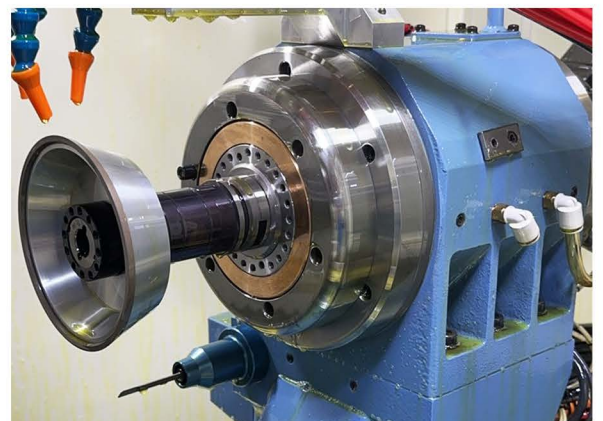
Software

- NUM NUMROTO software, Permanent upgrade;
- A variety of optional software packages for extending function and improving productivity;



Powerful Spindle

GIVEALGRIND N4 B6 is equipped with high-torque grinding spindle, suitable for large grinding margin processing and high-feed, large-depth, such as the flute of large diameter tool and other heavy processes. Combined with hybrid wheel and efficient cooling systems, it provides superior control of grinding heat and improved surface quality.



Automation

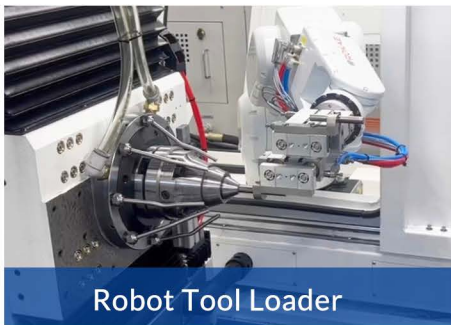
The GIVEALGRIND series is equipped with Renishaw probe for the accurate on-line measurement of the tool's diameter, length, edge, helical angle, front angle and oil hole position.

Automatic measurement can not only provide the necessary data for processing, but also can be integrated as a process into the processing action, such the detection and compensation basis of the processing results. The GIVEALGRIND series can be equipped with tool loader to enable the automated production of special cutting tools.

With the optional software package, the GIVEALGRIND can automatically correct the deviation according to the data measured, making it an ideal choice for unmanned operation and continuous processing.



Various options



Robot Tool Loader

Loading and unloading of the tools can be automatically carried out by the robot, which achieve unmanned operation and continuous processing. The loading capacity is determined by the pallets and the size of tools.



Automatic wheel changer

6(9) wheel packs with supported maximum enabling one-time processing of complex tools and separation of rough and finish grinding processes.



Tool support unit

Support unit is designed for long tools or overweight tools adjustable.



Giveal-View



Automatic tool clamping for HSK interface



Wheel dressing



Wheel measurement

Scalability

- The machine adopts a separated dual-slideway structure, making it easy to expand, it is available in a specialized model for **long tools with a maximum processing length of 800 mm.**
- The wheel loader has an independent mini gantry structure, which can be upgraded to a 9-station robotic tool changer.

Technical specifications

Structure:

Machine body is made of marble, with 7-column structure
Weight : Approximately 7000kg

Spindle:

allows up to 6(9)-station grinding wheel changer
Max 6(9) wheels each pack
Equivalent Max power* : 38 kw
Grinding wheel: Max ϕ 150 mm

Linear axes:

Servo motor direct drive ball screw
High precision feedback sensor

Rotary axes:

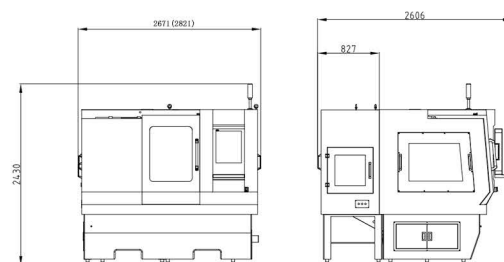
Rotary motor direct drive
High precision feedback sensor

Control system:

NUM Flexium / Flexium +

Machine data:

	GIVEALGRIND N4 B6
Tool diameter*	> 0.3 mm
Re-grinding tool diameter*	> 1 mm
Max machining length (Vertical direction)*	610(800) mm
Max machining length (Parallel direction)*	630(820) mm
Max machining diameter (Vertical direction)*	120 mm
Max machining diameter (Parallel direction)*	142 mm



* Machinable range under the standard condition.

* Process capability reaches the power lever.

* SNSTC reserves the right to update or amend specifications without prior notice.

